



## Non-Contact Bike Button

### nxtCycle Wave

Created specifically for the cyclist, the **nxtCycle Wave** is a non-contact push button digitally controlled using an active Infra-red sensor which is extremely robust and works in all weather conditions including rain and snow. Made from solid aluminum stock, this button is vandal & impact resistant for streets and bike paths. It's designed so the top of the station doubles as a handle, allowing the cyclist to steady themselves when waiting for a crossing indication.

With a wave of the hand 1-6" from the sensor, a momentary LED indication and audible tone (dee-dah) are activated with the pedestrian call. The **nxtCycle Wave** can be purchased in Momentary or Latching LED modes (require PBIC, PBIL isolator or a 242 isolator).

The button cup allows for simple installation across a wide range of pole sizes. The pole relief channel ensures for a secure and snug fit.

#### Specifications:

Idle Current: 125 $\mu$ A (microamps)

Clock Calibration Current: ~3mA (milliamps)

Operating Voltage DC: 12-36 VDC

Operating Voltage AC 12-24 VAC

#### Feedback:

Visual: LED Super Bright Red (Luminous Intensity: 5000 mcd)

Audible: Dee 3900 Hz – Dah 3600 Hz

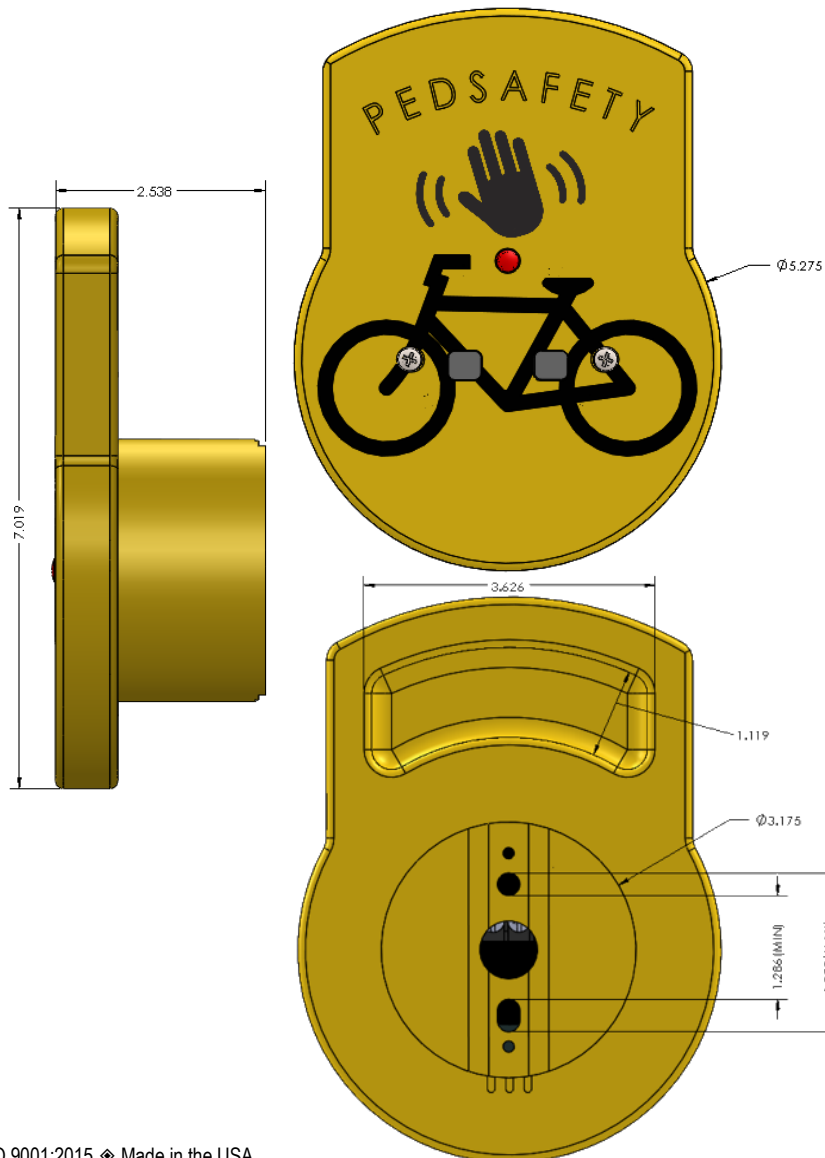
#### LED Operating Modes:

Momentary: LED on for 0.025 seconds to correspond with audible dee-dah beep and circuit closure.

Latching: LED activates after call is placed through non-walk phases and extinguishes at the beginning of the walk phase.

#### Isolator Card Requirement:

To ensure consistent performance of the Wave sensor over time, the **nxtCycle Wave** must periodically calibrate its internal timer. Although its idle current is very low, the current draw during timer calibration is high enough to place a call on most cabinet FT lines. To ensure operation free from false calls, we recommend the **nxtCycle Wave** be paired with a PBI-C or PBI-L isolator.





## Operating Specifications

Parameter	Rating
Operating Temperature Range	-34°C to +74°C -30 °F to +165°F
Operating Life	Greater than 100 million operations
Maximum Volume	70 dB @ 1 meter

## Design Compliance

Test Type	Compliance
Functionality	MUTCD 2009 - 4E
Transient Voltage Protection	IEC 61000-4-4, IEC 61000-4-5
Electrical Reliability	FCC Title 15 Subpart B

All certifications performed by certified independent testing laboratories.

## Part Number:

nxtCycle Wave	502-0102
---------------	----------

## Interfaces: Required for latching or non-latching

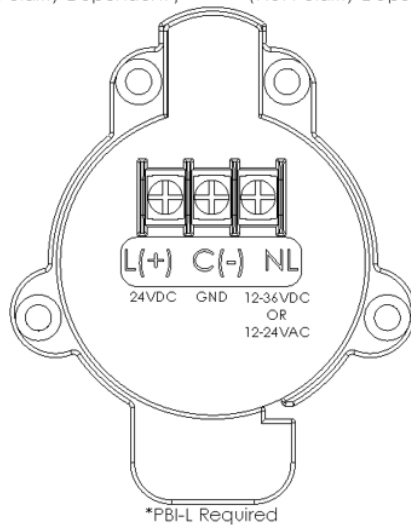
PBI-L (wall mount)	501-0010
PBIC-24 (card rack mount)	501-0005C
PBIC-120 (card rack mount)	501-0014

## Please specify the following attributes:

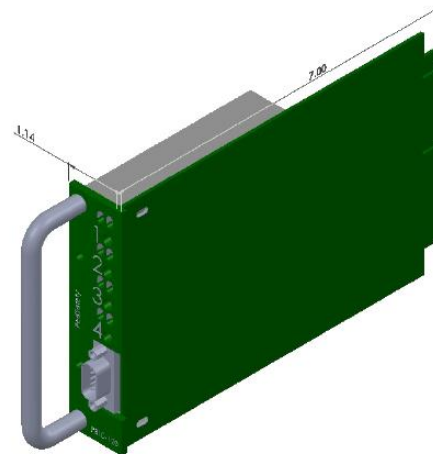
1. Color	2. Screw Type
Textured Black	Standard Phillips
Federal Yellow	Pinned Torx (T)
Green	
Unpainted/Natural	

## Terminal Configurations

Latching(L)\* Configuration (Polarity Dependent)    Non-Latching(NL) Configuration (Not Polarity Dependent)



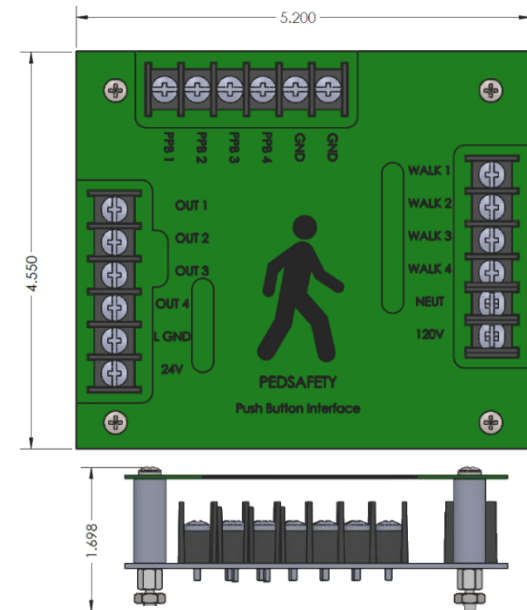
Terminal Blocks



PBIC Isolator Card

### Notes:

- Applicable sections only of referenced standards
- All specifications are subject to change without notice
- All specifications are typical unless otherwise specified



PBI Isolator