

# Plumbizers Aluminum

Pelco's aluminum Plumbizers, available in both straight and offset configurations, are designed to mount traffic signal assemblies to the end of a mast arm. Provided with hardware for mounting onto a 2-3/8" diameter tenon.



TENON MOUNT



## Straight Plumbizer Assy, Alum w/ Hardware

SE-0352 -  Coating  
PNC=Process No Color  
P\_\_=Paint



## Offset Plumbizer Assy, Alum w/ Hardware

SE-0353 -  Coating  
PNC=Process No Color  
P\_\_=Paint



Note: 1. All assemblies are supplied standard with stainless steel fasteners.  
2. See Reference Section page v for available paint colors.



# Plumbizers Bronze & Iron

Pelco's bronze and iron offset Plumbizers are designed to mount traffic signal assemblies on the end of a mast arm. Provided with hardware for mounting onto a 2-3/8" diameter tenon.



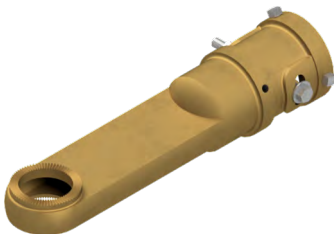
## Offset Plumbizer Assy, Bronze w/ Hardware

SE-4413 -  Coating  
PNC=Process No Color  
P\_\_=Paint



## Offset Plumbizer Assy, Iron Large Hole w/ Hardware

SE-3335 -  Coating  
P\_\_=Paint



## Straight Plumbizer Assy, Copper Alloy w/ Hardware

SE-0352-B -  Coating  
P\_\_=Paint



## Plumbizer Hardware Kit, 5/16"-18 x 3-1/2" Carriage Bolts Stainless slotted Washer & Hardware

SE-3282-SS

Note: 1. All assemblies are supplied standard with stainless steel fasteners.  
3. See Reference Section page v for available paint colors.



# Mast Arm Hangers Aluminum

Pelco's aluminum Mast Arm Hangers are designed to mount traffic signal assemblies on the end of a mast arm. Available in both 1-1/2" and tri-stud. Provided with hardware for mounting to a 2-3/8" diameter tenon.



**TENON MOUNT**



## Rigid Mast Arm Hanger, Alum 1-1/2" NPS w/ Hardware

SE-0350 -  -

Double Set Screws      Coating  
Blank=None      PNC=Process No Color  
DS=Double      P\_\_=Paint  
Set Screws



SE-3042  
Hardware Kit

## Rigid Mast Arm Hanger, Alum Cast Nipple

SE-3056 -

Coating  
PNC=Process No Color  
P\_\_=Paint



SE-5123  
Hardware Kit

## Rigid Mast Arm Hanger, Alum Tri-Stud

SE-3119 -

Coating  
PNC=Process No Color  
P\_\_=Paint

Note: 1. All assemblies are supplied standard with stainless steel fasteners.  
2. See Reference Section page v for available paint colors.



# Mast Arm Hangers Aluminum

Pelco's aluminum Mast Arm Hanger are for mounting traffic signal assemblies on the end of a mast arm. Free-swinging styles are available with a cast nipple or all thread. Provided with hardware for mounting to a 2-3/8" diameter tenon.



## Free-Swinging Mast Arm Hanger, Alum 1-1/2" NPS w/ Hardware

SE-3103 -  -  -

Insulator Bushing      Stainless Bushing      Coating  
Blank=None      Blank=None      PNC=Process No Color  
IB=Insulator Bushing      SB=Stainless      P\_\_=Paint

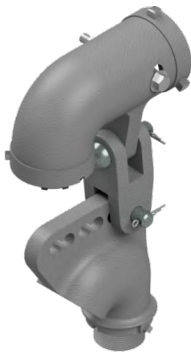


SE-3042  
Hardware Kit

## Free-Swinging Mast Arm Hanger Assy, Alum w/ Outlet Body & Cast Nipple

SE-3201 -  -  -

Stainless Bushing      Stainless Upgrade      Coating  
Blank=None      Blank=None      PNC=Process No Color  
SB=Stainless Bushing      SB=Stainless      P\_\_=Paint



## Free-Swinging Mast Arm Hanger Assy, Alum w/ Outlet Body & All Thread Nipple

SE-3314 -  -  -

Stainless Bushing      Stainless Upgrade      Coating  
Blank=None      Blank=None      PNC=Process No Color  
SB=Stainless Bushing      SB=Stainless      P\_\_=Paint

Note: 1. All assemblies are supplied standard with stainless steel slotted washers and fasteners, with galvanized hardware on outlet body. Stainless upgrade shall include stainless steel hardware and pins.  
3. See Reference Section page v for available paint colors.



# Mast Arm Hangers Aluminum

Pelco's aluminum Mast Arm Hanger are for mounting traffic signal assemblies on the end of a mast arm. Free-swinging styles are available with a cast nipple or all thread. Provided with hardware for mounting to a 2-3/8" diameter tenon.



## Rigid Mast Arm Hanger, 2-Way, Alum 1-1/2" NPS Upper & Tri-Stud Lower

SE-3346 -  -   
 Set Screw                      Coating  
 Blank=Single Set Screw      PNC=Process No Color  
 DS=Double Set Screw        P\_\_=Paint

Note: 1. All assemblies are supplied standard with stainless steel fasteners.  
 2. See Reference Section page v for available paint colors.



# Mast Arm Ell Hangers Bronze & Iron

Pelco's bronze and iron Ell Hangers, for mounting traffic signal assemblies on the end of a mast arm, are designed with serrations for locking onto the top of a signal. Provided with hardware for mounting to a 2-3/8" diameter tenon.



## Ell Assy, Rigid Tenon Mount, Bronze 1-1/2" NPS w/ Serrations & Hardware

SE-4412 -  Coating  
PNC=Process No Color  
P\_\_=Paint



## Ell Assy, Rigid Tenon Mount, Iron 1-1/2" NPS w/ Serrations & Hardware

SE-4439 -  Coating  
P\_\_=Paint

Note: 1. All assemblies are supplied standard with stainless steel fasteners.  
2. See Reference Section page v for available paint colors.

